

### Sightseeing Buses

Various sightseeing buses are in operation according to seasons.

**Summer:** “Pirika-go” – One-day course covering the Kushiro Marsh, Lake Mashu, Lake Kussharo and Lake Akan

**Winter:** “White Pirika-go” – Course aiming to enjoy East Hokkaido in winter by making a tour to Lake Akan, Lake Mashu, etc.

◆Akan Bus: TEL/FAX: 0154-37-2221 / 0154-37-9083  
<http://www.akanbus.co.jp/>



Lake Kussharo



Lake Mashu



#### Climate of Kushiro

The average temperature in summer is below 20°C in Kushiro, and a lot of sea fog is generated in coastal areas. In winter, fine weather continues and the weather is unexpectedly bearable with little snow.

Aug. Mean temp.	Kushiro 17.9°C Sapporo 22.0°C Tokyo 27.1°C	Jan. Mean temp.	Kushiro -5.6°C Sapporo -4.1°C Tokyo 5.8°C	Annual sunshine hours	Kushiro 1941.4 hrs. Sapporo 1774.8 hrs. Tokyo 1847.2 hrs.	Annual precipitation	Kushiro 1045.2 mm Sapporo 1127.6 mm Tokyo 1466.7 mm
-----------------	--	-----------------	---	-----------------------	---	----------------------	---



SUPER FANTASTIC  
Kushiro Lake Akan

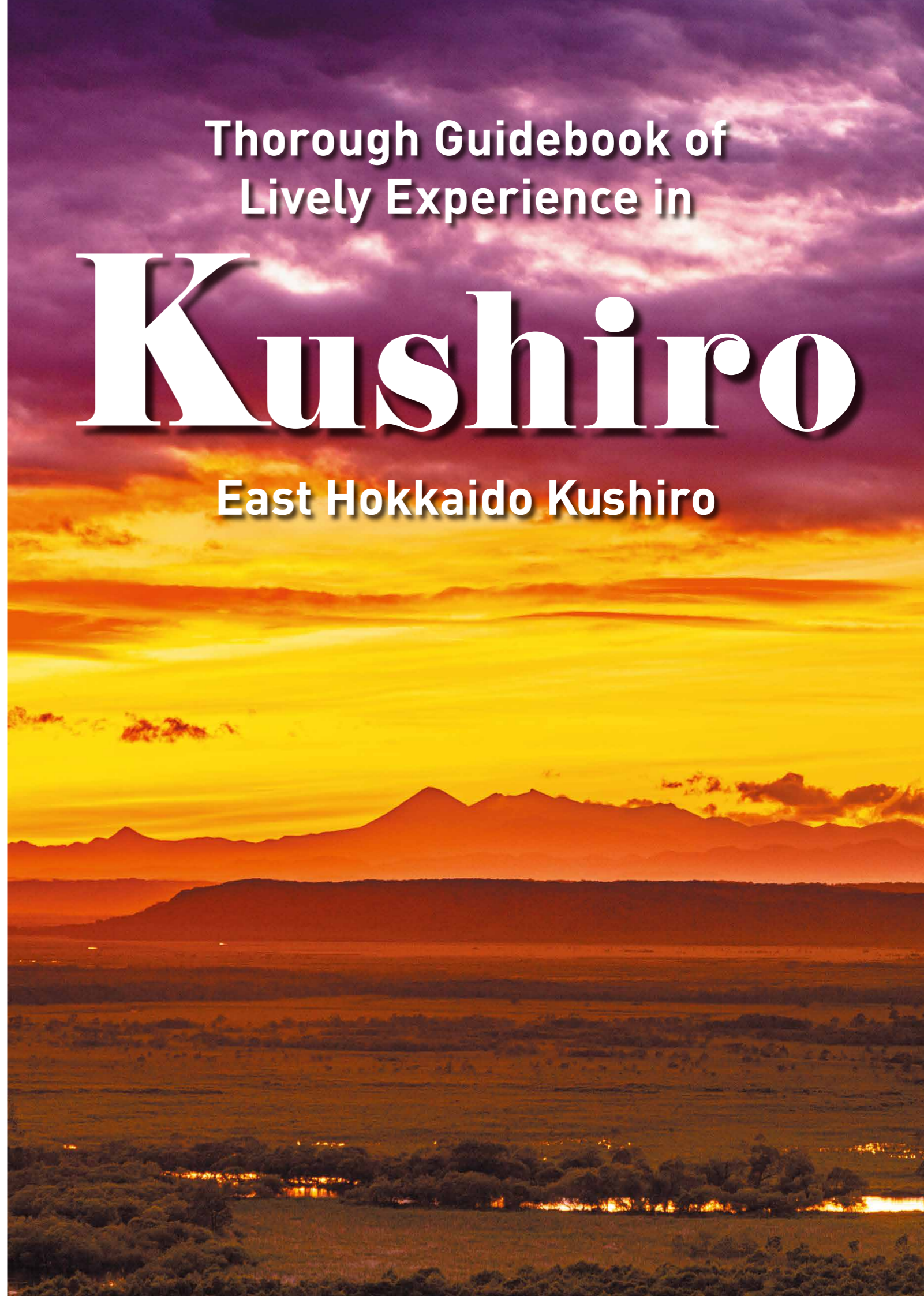
For inquiries, please contact : Kushiro Tourism & Convention Association  
TEL: 0154-31-1993  
FAX: 0154-31-1994  
E-mail: [mail@kushiro-kankou.or.jp](mailto:mail@kushiro-kankou.or.jp)  
URL: <http://www.kushiro-lakeakan.com/>

Published by: Kushiro Tourism & Convention Association /  
City of Kushiro

Published in: July 2023

\* The routes of transportation systems included  
in this booklet are as of June 2023.

# Thorough Guidebook of Lively Experience in Kushiro East Hokkaido Kushiro



# Kushiro

## Kushiro Marsh Observatory

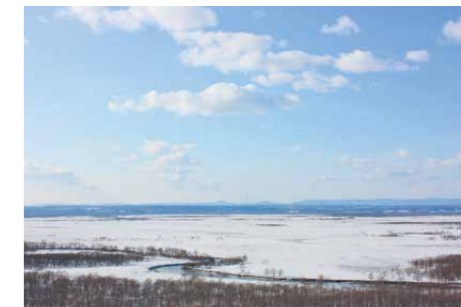
This building, reminiscent of an old European castle, is full of information on the wetland and is surrounded by a boardwalk 2.5 km in circumference. The “satellite square,” located in the middle section of the boardwalk, offers the best overlooking view west of the Kushiro Marsh. (The boardwalk is partially closed in winter.)

Access: Take Akan Bus, Tsurui Route, from JR Kushiro Station Bus Terminal (approx. 40min.) to Marsh Observatory Bus Stop  
TEL/FAX: 0154-56-2424



Kushiro Marsh Observatory

## view point 3

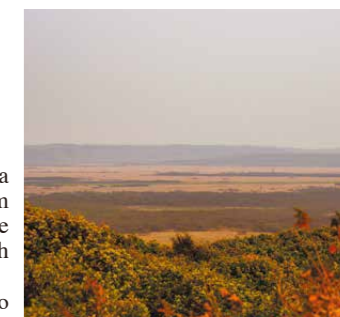


Hosooka Viewpoint

### 1.Hosooka Viewpoint

This observatory is representative of the eastern portion of the wetland. It offers a spectacular view of the Kushiro River meandering through the wetland and the sun as it sets over the wetland with Mt. Oakan and Mt. Meakan in the distance.

Access: Take Senmo Line from JR Kushiro Station (approx. 15min.) to Kushiro Shitsugen Station, and walk for 10 min.

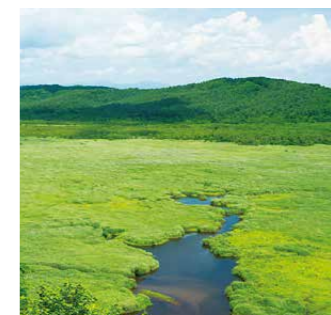


Hokuto Viewpoint

### 2.Hokuto Viewpoint

Hokuto Viewpoint commands a panoramic view of the wetland from the west. You can feel the sheer size of the Kushiro Marsh from here with nothing to obstruct your view.

Access: Approx. 500 m from the Kushiro Marsh Observatory



Kottaro Marsh Viewpoints

### 3.Kottaro Marsh Viewpoint

From the Kottaro Marsh Viewpoint, you can witness the most primeval images of the wetland.

Access: Approx. 50 min. by car from Kushiro City

## Onnenai Boardwalk

A wooden walkway with courses ranging from 500 m to 3 km in length. Choose one that best suits your needs and enjoy observing the wild birds and vegetation. What's more, the 2 km-course is wheelchair accessible. Since snow is not removed in winter, visitors can enjoy cross-country skiing here.

Access: Take Akan Bus, Tsurui Route, from JR Kushiro Station Bus Terminal (Approx. 50min.) to Onnenai Visitor Center Bus Stop.



## Norokko-Train & SL Fuyu-no-Shitsugen Train



Kushiro Shitsugen Norokko-Train



SL Fuyu-no-Shitsugen-Train

Kushiro Shitsugen Norokko-go, a train slowly running through the green wetland in summer, and the smoke emitting steam locomotive, traveling through white snowfields in winter, have become typical sights of the Kushiro Marsh.

## Activity



Canoeing(Summer)

### Canoeing

Traveling down the Kushiro River, which meanders through the marsh, you can experience the marsh in the same way as flora and fauna in the marsh do.



Canoeing(Winter)

### Winter Canoeing

You can enjoy canoeing year-round in Kushiro. Gaining particular popularity these days is canoeing in the serene wintry scenery of snow and ice. If you're lucky, you may even see Hokkaido sika deer and eagles.



Horseback riding

### Horseback riding

Let's trek through the surrounding area and deep in the wetland on horseback. With easy lessons, even beginners will feel comfortable with horseback riding.

## Kushiro Shitsugen National Park



The Kushiro Marsh is a wetland registered under the Ramsar Convention and Japan's largest wetland with an area of 28,000 ha. Blessed with diverse ecosystems, the park is particularly renowned as a habitat for the Red-crowned crane a Special Natural Monument.

# Red-crowned Crane, the Symbolic Bird



Reduced to a population of over a dozen, the Red-crowned crane became endangered as a result of indiscriminate hunting. Thanks to the conservation efforts of neighboring residents, however, the population has increased and the Red-crowned crane was designated as a Special Natural Monument in 1952. Currently, approximately 1,800 Red-crowned cranes live in East Hokkaido throughout the year. The largest bird in Japan, Red-crowned cranes are regarded as birds of love since, once they have found a mate, they remain in pairs for the rest of their lives and cooperate in bringing up their offspring.

## Red-crowned Crane can be seen throughout the year.

### •Kushiro Zoo

The Kushiro Zoo has the Red-crowned crane Protection and Propagation Center. In addition, Blakiston's fish owls, Steller's sea eagles and white-tailed sea eagles, which are all natural monuments, can also be seen here.

Access: Take Akan Bus, Refre Route or Akanhon-cho Route, from JR Kushiro Station Bus Terminal (approx.1hr.) to Dobutsuen (Zoo) Bus Stop  
TEL/FAX:0154-56-2121 / 0154-56-2140



### •Kushiro Crane Reserve

Here, male and female Red-crowned cranes are raised in an environment similar to their natural habitat. Visitors can see adorable chicks in the spring after successful breeding.

Access: Take Akan Bus, Akan Route, from JR Kushiro Station Bus Terminal (approx. 55 min.) to Tsuru Koen Bus Stop  
TEL/FAX: 0154-56-2219 / 0154-56-2216

## Wild Red-crowned Cranes a gather in several hundreds in the following feeding grounds from late October to late March

•Kushiro Akan International Crane Center (GRUS) /Crane Observation Center Japan's only facility engaging in Red-crowned crane research, education and protection. The facility contains exhibits with commentaries, and Red-crowned cranes can be viewed there all year round in a semi-natural outdoor environment.

During the November – March period of artificial feeding at the adjacent Observation Center, up to around 300 wild Red-crowned cranes can be seen.

Access: Take Akan Bus, Akan Route, from JR Kushiro Station Bus Terminal (approx. 1 hr.) to Tancho no Sato Bus Stop  
TEL/FAX:0154-66-4011/0154-66-4022

### •Tsurumidai Plain

Access: Take Akan Bus, bound for Tsurui, from JR Kushiro Station Bus Terminal (approx. 1 hr.) to Tsurumidai Bus Stop

### •Tsurui/Itoh Tancho Sanctuary

Access: Take Akan Bus, bound for Tsurui, from JR Kushiro Station Bus Terminal (approx. 1 hr.) to Tsurui Mura Yakuba mae Bus Stop, and walk 15 min.

TEL/FAX:0154-64-2620/0154-64-2239

## Cool KUSHIRO landmark

The Cool KUSHIRO landmark is a new photo spot at the foot of Nusamai Bridge. As you probably know, the word "cool" means both "moderately cold" and "attractive (slang)." This makes it the perfect term to describe Kushiro, where the maximum average summer temperature is about 21°C. Like Nusamai Bridge, this landmark is illuminated from sunset until midnight, adding to the spectacle. Don't miss out on your chance to take cool photographs in front of this undoubtedly photo-worthy spot.



## Strolling in Kushiro City 5



### 1.Nusamai Bridge

Nusamai Bridge is one of the top three bridges in Hokkaido, along with Toyohira Bridge in Sapporo and Asahi Bridge in Asahikawa. It is enveloped with white sea fogs in summer and colored red by the setting sun in autumn. 10-min. walk from JR Kushiro Station

#### Statues of the Four Seasons

Bronze statues symbolizing the four seasons of East Hokkaido, made by a sculptor representative of modern Japan, are standing on the rails of Nusamai Bridge.



### 2.Kushiro Fisherman's Wharf MOO

Representing the waterfront of Kushiro, Fisherman's Wharf MOO consists of restaurants and shops. The wharf accommodates numerous souvenir shops and eateries ranging from large-scale restaurants and outdoor shop and food stalls at the port. (Minato no Yatai) 10-min. walk from JR Kushiro Station  
TEL: 0154-23-0600



### 3.Kushiro City Museum



Located at the edge of Lake Harutori, the Kushiro City Museum building is featured by its shape as a Red-crowned Crane spreading its wings. The museum offers information on the geography, history and climate of Kushiro.

Access: Take Kushiro Bus, Route No. 2, 12, 16, 17, or 55, from JR Kushiro Station Bus Terminal (approx. 10 min.) to Shiritsu Byoin(City General Hospital) mae Bus Stop, and walk 5 min.

TEL/FAX : 0154-41-5809/0154-42-6000

### Tottori Hyakunenkan (Tottori Centennial Museum)

This castle inspired by Tottori Castle was built by migrants from Tottori in commemoration of the 100th anniversary of their relocation. It is now used as a museum displaying heirlooms and materials on reclamation brought by the Ikeda clan of the Tottori Domain.

Access:Take Kushiro Bus, Route No.36 or No.38, from JR Kushiro Station Bus Terminal (approx.15min) to Tottori Jinja Bus Stop



## Shopping

### Showa District

There is a large-scale shopping mall, and surrounding it are drug stores, toy stores and electric appliance shops.

Access: Take Kushiro Bus Route No.28,66,77 or 88 from JR Kushiro Station Bus Terminal (approx. 30 min.) to AEON SC(AEON MALL Kushiro Showa) Bus Stop



### Kushiro-cho District

Featuring a shopping center with stores that carry brand names popular among young women, men's tailors and sporting goods retailers.

Access: Take Kushiro Bus Route No.10,32,35,55,101 or 102 from JR Kushiro Station Bus Terminal (approx. 30 min.) to AEON Kushiro Bus Stop

### Harutori District

With a shopping complex dealing in stationery, CDs, DVDs and publications on a vast one floor as the core, there are also drug stores, fashion volume retailers and revolving sushi bars, and other restaurants. Adjoining the shopping complex is the Harutori Ice Arena, where you can enjoy ice skating.



### 4.Kushiro City Lifelong Learning Center (MANABOTTO NUSAMAI)



The Center's appearance is based on the image of a lighthouse. From the restaurant and the observation room on the 9th and 10th floor, you can enjoy not only a panoramic view of Kushiro City, but also the mountains in Akan and Cape Erimo in the distance. Access: 20 minute-walk from JR Kushiro Station  
TEL/FAX:0154-41-8181/0154-41-8182

### 5.Yonemachi Park

The Yonemachi Park area, overlooking the Port of Kushiro, is the birthplace of Kushiro City. On the opposite side of the park is Yonemachi Heritage Museum, the oldest wooden house in Kushiro City.



### Kushiro Itsukushima Shrine

As its name suggests, this shrine was established by "inviting" the god from Hiroshima's Itsukushima Shrine, and has been believed to be the guardian angel of Kushiro residents since the Edo period. This shrine, which is Kushiro's oldest, is representative of shrines in Kushiro, and its goshuincho stamp book, the design of which changes every month, is incredibly popular.

Access:Take Kushiro Bus, Route No.1, from JR Kushiro Station Bus Terminal (approx.7min) to Yonemachikoen Bus Stop



## Autumn & Winter Special!

### Autumn Recommendation

#### Kushiro sunsets



Kushiro is touted as one of the world's three best places to watch the setting sun, with the other two being Manila Bay in the Philippines and Bali Island in Indonesia.

Kushiro is known for its beautiful sunsets throughout the year, but particularly captivating is the large and clearly defined sun as it sets over Kushiro Port in the autumn-winter period characterized by many crisp, clear days. The city has hosts of sunset-viewing spots, including Nusamai Bridge.



### Winter Recommendation Lotus leaf-shaped ice formations

On early winter mornings during periods of extreme cold, lotus leaf-shaped ice formations (a.k.a. pancake ice) appear on the Kushiro River in central Kushiro. Kushiro is the only place in Japan where these lotus leaf-shaped ice formations can be seen in the city center.



## Special pass!

Enjoy 5 local sightseeing spots for 5 days at a special low price with the Shitsugen Marshland 55 Pass!

### Shitsugen Marshland 55 Pass

Pass Valid At:

- Kushiro Marsh Observatory
- Kushiro Zoo
- Kushiro City Museum
- Kushiro Crane Reserve
- Akan International Crane Center

Cost: 1,030 yen



Learn about wetlands at Kushiro City Museum, enjoy a stroll and marvel at the view from Kushiro Marsh Observatory, meet the inhabitants of the wetlands such as Blakiston's Fish Owl at the Kushiro Zoo, and experience the grace of the spirit of the wetlands, the Red-crowned crane, at the Crane Reserve and Crane Center.

※Prices may change depending on the proposed consumption tax revision.



## Soba or buckwheat noodles

Yabu soba (dark, sweet noodles made from the whole buckwheat grain) is the mainstay soba in Kushiro and is characterized by its unique strong taste and sweet dip. Dishes unique to Kushiro, such as egg-mixed buckwheat noodles and soba zushi (buckwheat noodle rolls), are also available.

## Sushi

Sushi that uses fresh ingredients from Kushiro's port is exceptional. Sushi in Kushiro is touted as the best in Japan whether you eat it at an exclusive sushi restaurant or a conveyor belt sushi.



## Ramen

Kushiro ramen features thin noodles and light soup. It is one of the four major types of ramen noodles, along with Sapporo, Asahikawa and Hakodate ramen.

# Kushiro's Flavors and Dishes



## Sweets

Kushiro has a wide variety of sweets, ranging from ice cream abundant in high-quality locally produced raw milk and other dairy products to Japanese bean and pea based confectionaries.



## Robata Hearthside barbecue

Kushiro is believed to be the cradle land of hearthside barbecue. Fresh seafood grilled over charcoal fire is delicious beyond expression.



## Washo Ichiba Market

Accommodating approximately 40 shops, Washo Market is considered to be the kitchen of the residents of Kushiro City. Crabs, salmon and other fresh seafood landed in Kushiro as well as processed seafood can be bought here. In recent years, "Katte-Don (as you wish DON)" has been very popular among tourists.  
Access: 2 min.-walk from JR Kushiro Station



## Katte-Don

Top your boiled rice, available at a delicatessen, with your choice of sashimi (slices of raw fish) from a variety of stores.



## Local sake

Locally-brewed sake "Fukutsukasa" was born out of the tasty waters in Kushiro and rice produced in the famous paddies of Tohoku.



## Zangi

Deep-fried chicken is called "zangi" in Hokkaido. The people of Kushiro dip zangi into sauce, which is so simple in taste so that they can eat a lot.

# Akan

## Akan-Mashu National Park

Akan-Mashu National Park features a rich natural landscape of primeval forests surrounding crater lakes that were formed by volcanic activities. This park is also renowned as a hot spring resort.

### Lake Akan

Lake Akan is well known for its Marimo(moss ball), a Special Natural Monument. The lake is enjoyable throughout the year, with ice breaking in spring, mountains covered with verdure and mysterious blue lake surfaces in summer, beautiful leaves in autumn and numerous events on the thick frozen ice in winter.

## Feel and experience the nature of Akan



### Akankohan Eco-museum Center

An Akan Masyu National Park facility exhibiting materials on the natural environment of the Akan area and *marimo* (moss balls) from Lake Akan. The Center serves as a visitor showcase for the local region.  
TEL/FAX: 0154-67-4100 / 0154-67-2568



### Special natural monument, marimo (moss balls)

Appreciate marimo, a special natural monument, by excursion boat. Lake Akan is the only site in the world where beautiful round marimo can be found living in clusters.



### Lake Onneto

Onneto is a lake that looks like it is from a different world. Autumn leaves there are breathtakingly beautiful.  
Access: Approx. 30 min. by car from Lake Akan

### Bokke and the nature trail

Bokke, one of the volcanic vents created by a past eruption, is a small mud volcano. The Bokke area is complete with a nature trail, along which visitors can enjoy a panoramic view of the surrounding forests, lakes and mountains of Akan. On summer nights, visitors can also delight in experiencing Ainu myths through fantastic digital arts – Kamuy Lumina.



## Ainu Feel and experience Ainu culture

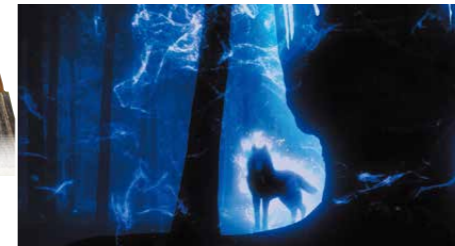


### Lake Akan Ainu Theater<Ikor>

Where traditional Ainu dance, and Lost Kamuy, can be enjoyed at the Akanko Ainu Kotan.  
TEL/FAX: 0154-67-2727 / 0154-67-2657



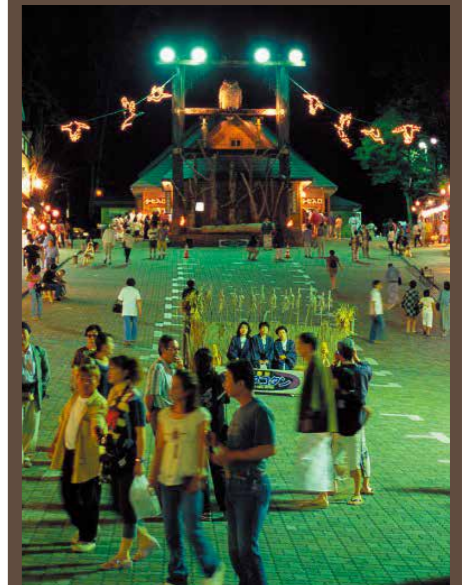
Traditional Ainu dance



### Lost Kamuy

This stage performance showcasing the coexistence between the Ainu people and wolves is produced by combining traditional dance, contemporary dance and digital art based on the teachings and legends of the Ainu, allowing visitors to experience the world view of the Ainu.

### Ainu Kotan



In the Ainu language, Ainu and Kotan mean a human being and a village, respectively. There are approximately 30 souvenir shops, standing side by side, where you can come in contact with the Ainu culture here.

### Ainu cuisine





# Mashu

## Lake Mashu

Lake Mashu is mysterious and one of the world's most transparent lakes.  
 Access: Take Senmo Line from JR Kushiro Station to Mashu Station (approx. 1 hr. & 30 min.) Take Akan Bus bound for Lake Mashu Observatory No.1 (in seasonal operation) from JR Mashu Station (approx. 25 min.)

## Lake Kussharo

Lake Kussharo is the second largest lake in Hokkaido, where 400 to 500 whooper swans come in winter.  
 Access: Approx. 20 min. by car from JR Mashu Station

# Kussharo

**Lake Mashu is mysterious and one of the world's most transparent lakes.**  
**Access: Take Senmo Line from JR Kushiro Station to Mashu Station (approx.**  
**1 hr. & 30 min.) Take Akan Bus bound for Lake Mashu Observatory**  
**No.1 (in seasonal operation) from JR Mashu Station(approx. 25 min.)**

Lake Kussharo is the second largest lake in Hokkaido, where 400 to 500 whooper swans come in winter.  
Access: Approx. 20 min. by car from JR Mashu Station

-10-

Map of Kushiro Marsh and Places Where Red-crowned Cranes Can be Seen



[illegible]

# Enlarged View of Kushiro City (downtown)

**Map symbols**

- Hotel
- Information
- Police box
- Souvenir shop
- Rent a car
- Bank
- Post office
- CVS Convenience store
- Gas station
- Rest room
- Mizu no Kamyui Tourism Area FREE Wi-Fi

**Hotels:** Hotel Information (QR code)

**Landmarks:** Kushiro Station, JR Kushiro Station, Underground passage, Sanjyukken Douro Street, Pedestrian bridge, Kita-odori Ave., Sakaemachi Park, Kusuri Bridge, Nusamai Riverside Square, Cool Kushiro Monument, Nusamai Tourist Guide Station, EGG (Garden), Fisherman's Wharf MOO, Kushiro Art Museum, Kushiro Tourism & International Relations Center, Kushiro River, Minami-odori Ave., Rotary, Flower Clock, Nusamai Park, Life Long Learning Center(MANABOTTO), 3F市立美術館 / 3F City Museum of Art.

**Streets:** To Obihira, To Nemuro-Akashiri-

**Scale:** 0 50 100m